



Tankplaner

Reduce diesel costs with automatic planning of refueling stops

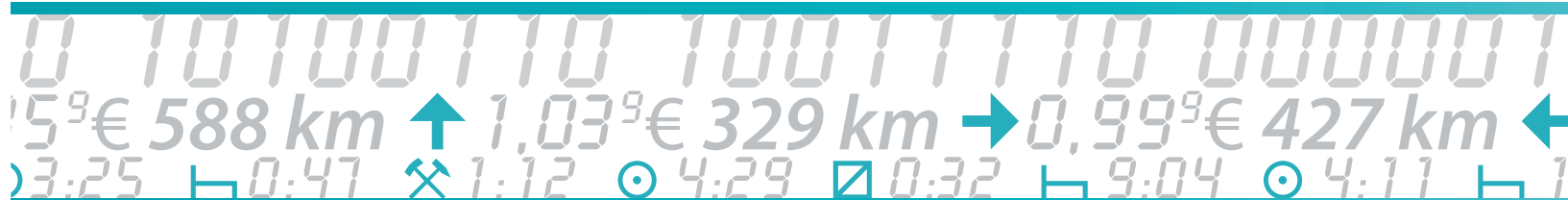
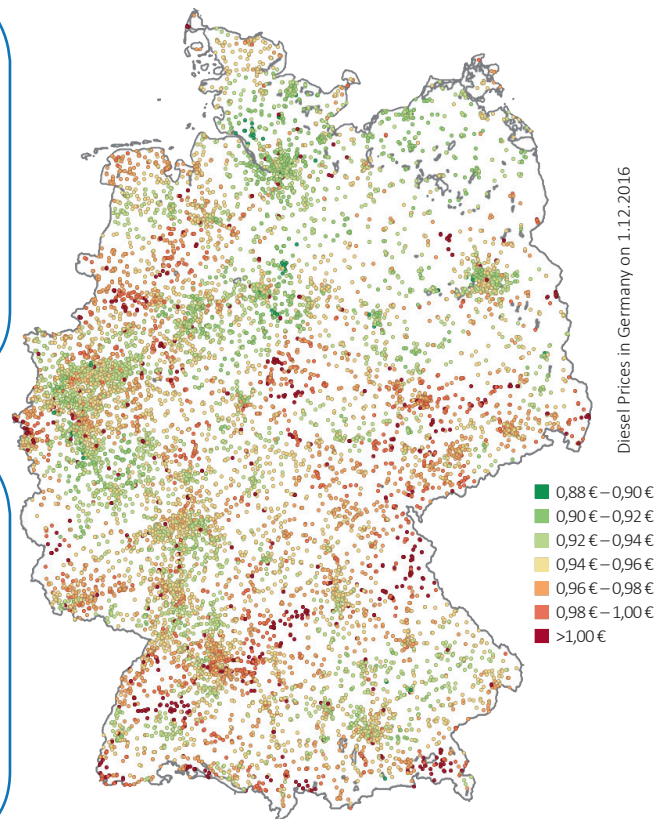
Creating a good plan of refueling stops in the commercial transportation sector is not easy. Numerous parameters must be considered: current fuel levels and range, the planned route, gas station prices, and of course detours. The Tankplaner software helps you with this complex planning by calculating a cost-optimal refueling recommendation while taking into account the afore mentioned factors – individually for every vehicle and in real time.

With Tankplaner, you can...

- save on diesel costs with the intelligent exploitation of fuel price differences
- plan cost optimal refueling stops with only a few clicks
- continue working in your usual work environment thanks to simple integration means
- take your individual discount agreements for the plan into consideration
- assess your current refueling strategy

The Tankplaner works...

- by considering all relevant gas stations along the planned route
- on the foundation of an innovative optimization algorithm from a research project
- with an automatic trade-off between savings and detours
- Europe-wide for short- and long-distance travel
- with the inclusion of time slots as well as driving and resting times



“ The cost-optimal planning of refueling stops is a highly current topic, whose savings potential is not fully exploited by many companies. With the Tankplaner, there is now, for the first time, a tool, which supports this planning efficiently and with verifiable utility. ”

Prof. Dr. Thomas Bousonville, htw saar